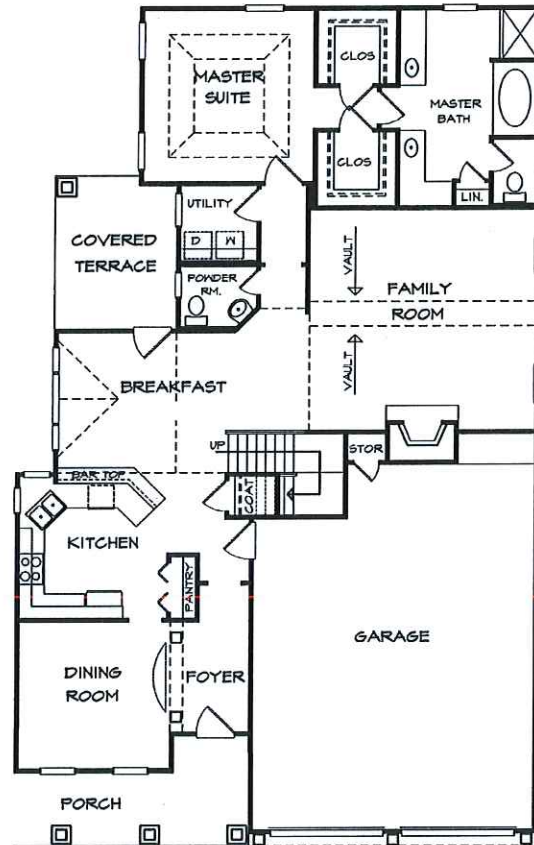


SECOND FLOOR PLAN



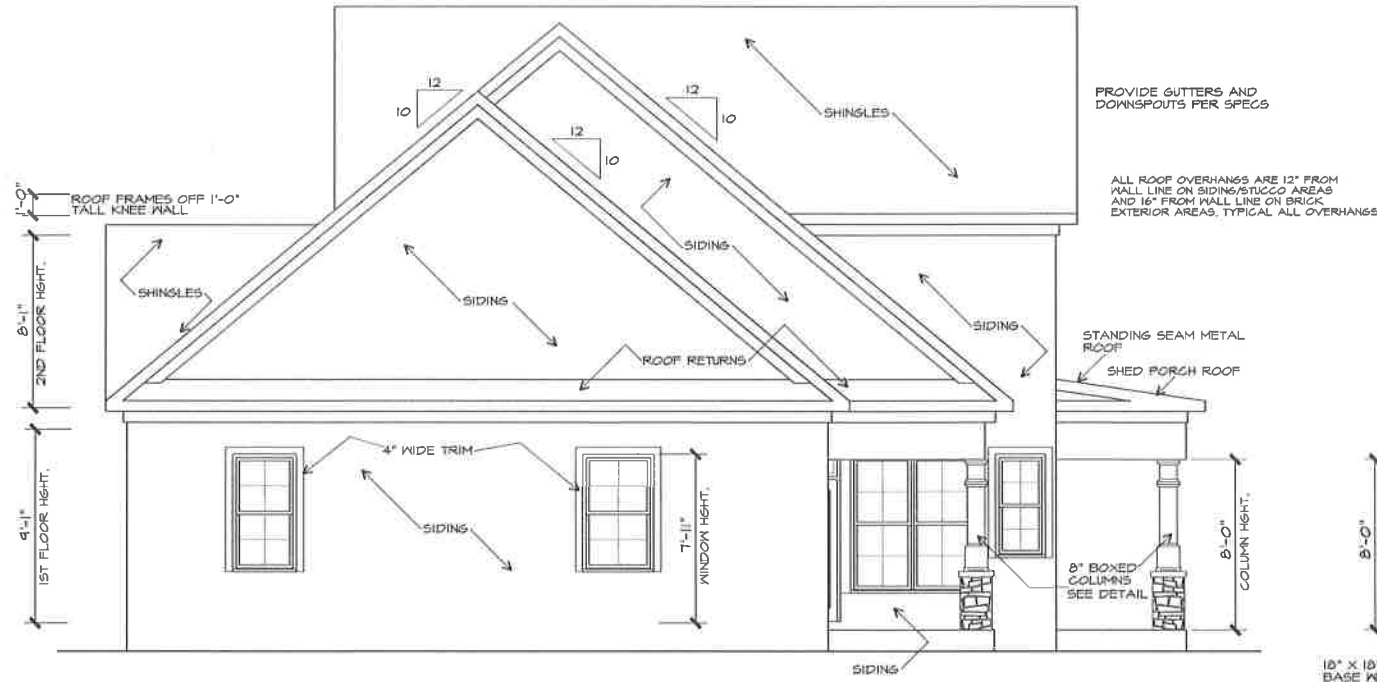
FIRST FLOOR PLAN



This artist rendering and floor plan graphics are for demonstration purposes only and are not intended to be an exact representation or show specific detailing. Included features are subject to change without notice. Actual construction materials and floor plan may vary per community. Information believed accurate but not warranted. See agent for floor plan details or to tour available homes.

NOTE: BUILDER TO PROVIDE EITHER RIDGE VENTS, ROOF VENTS, OR POWER ATTIC VENTS PER CODE REQUIREMENTS

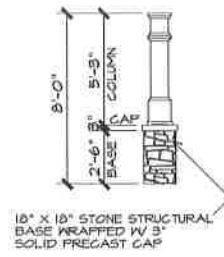
NOTE: ROOF FRAMES OFF TOP OF CEILING JOIST, RAFTERS STACK WITH CEILING JOIST, CEILING JOIST STACK WITH STUDS



PROVIDE GUTTERS AND DOWNSPOUTS PER SPECS

ALL ROOF OVERHANGS ARE 12" FROM WALL LINE ON SIDING/STUCCO AREAS AND 16" FROM WALL LINE ON BRICK EXTERIOR AREAS, TYPICAL ALL OVERHANGS

COLUMN DETAIL



REAR ELEVATION

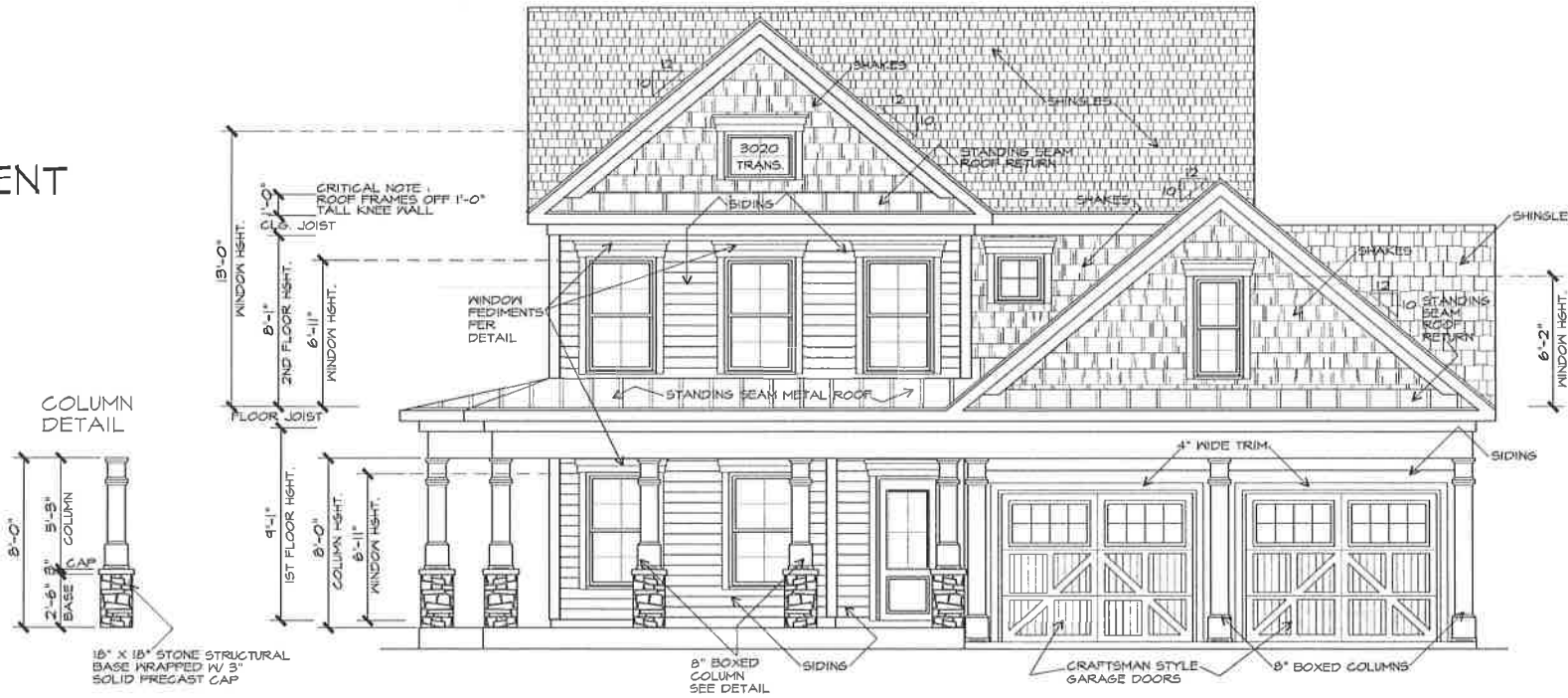
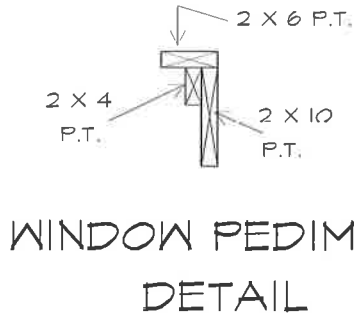
1/4" = 1'-0"

THIS IS A MULTIPLE BUILD CONSTRUCTION LICENSE ISSUED 9-15-2016 THE CONSTRUCTION LICENSE TO BUILD THIS PLAN WAS ISSUED TO:

DAVID LINDSEY HOMES
140 VILLAGE CIRCLE
SENOIA, GA, 30276

NO ONE ELSE IS ALLOWED TO BUILD FROM THIS PLAN. A SIGNED CONSTRUCTION LICENSE WAS ISSUED WITH THIS PLAN FOR PROOF OF AUTHENTICITY, ALL BUILDING DEPARTMENTS MUST ASK FOR THE CONSTRUCTION LICENSE BEFORE ISSUING A BUILDING PERMIT FOR CONSTRUCTION TO BE PROTECTED AGAINST ANY COPYRIGHT VIOLATION

ALL DIMENSIONS ARE COMPUTED MATHEMATICALLY. DO NOT SCALE ANY DRAWINGS. REPORT ALL DISCREPANCIES TO DK DESIGNS, INC. PRIOR TO ANY WORK OR MATERIALS ORDER. SOLE LIABILITY OF DK DESIGNS, INC. SHALL BE TO CORRECT ANY DISCREPANCY ON THE PLAN ITS SELF. ALL STRUCTURAL ASPECTS OF THIS HOME ARE THE BUILDING CONTRACTORS RESPONSIBILITY. ALL STRUCTURAL MEMBERS SHOULD MEET OR EXCEED LOCAL COUNTY AND STATE BUILDING CODES. DK DESIGNS, INC. ASSUMES NO RESPONSIBILITY FOR CONSTRUCTION ERRORS.



FRONT ELEVATION

1/4" = 1'-0"

COPYRIGHT DK DESIGNS, INC. ALL RIGHTS RESERVED. ANY DUPLICATION, DISTRIBUTION, RESALE OR REPRODUCTION OF ANY KIND TO THESE PLANS IS STRICTLY PROHIBITED UNLESS AUTHORIZED IN WRITING BY DK DESIGNS, INC.

DK DESIGNS, INC.
FAYETTEVILLE, GA.

770-460-9445

DK DESIGNS, INC.

REVISION

SHEET OF



DK DESIGNS, INC.

CALDWELL

www.dkplans.com