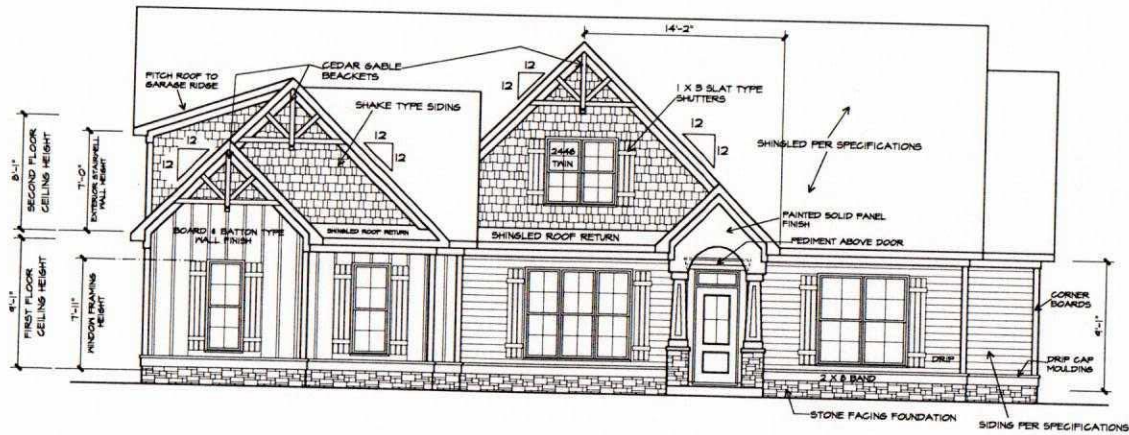


RIGHT SIDE ELEVATION

1/4" = 1'-0"



FRONT ELEVATION

1/4" = 1'-0"

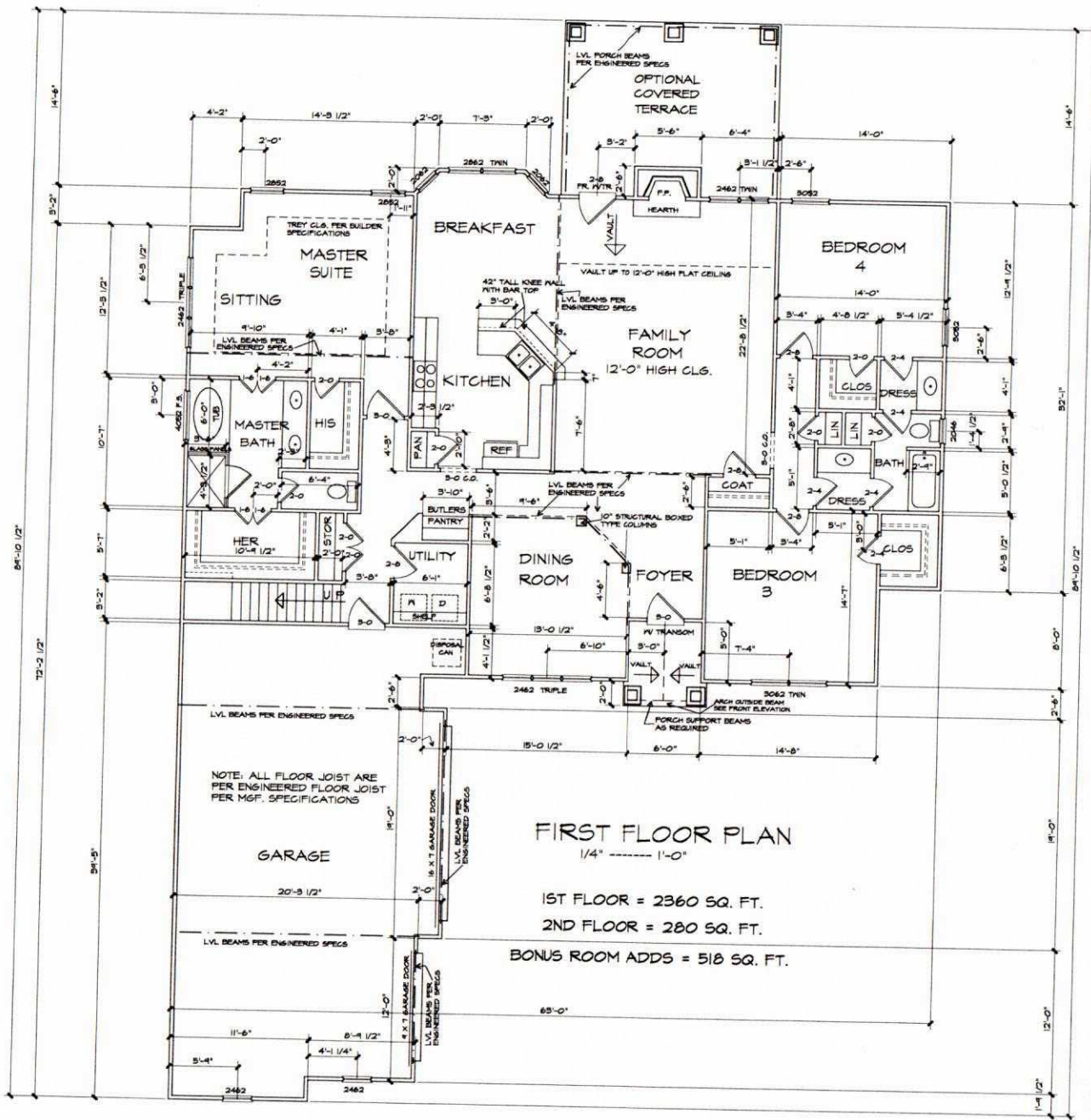
DK DESIGNS, INC.
FAYETTEVILLE, GA.
770-460-4445

DK DESIGNS, INC.

REVISION
SHEET 01 OF 01

ALL BID
PROFESSIONAL MEMBER OF
BUILDING DESIGN

MASONVILLE PARK
COURTYARD ENTRY



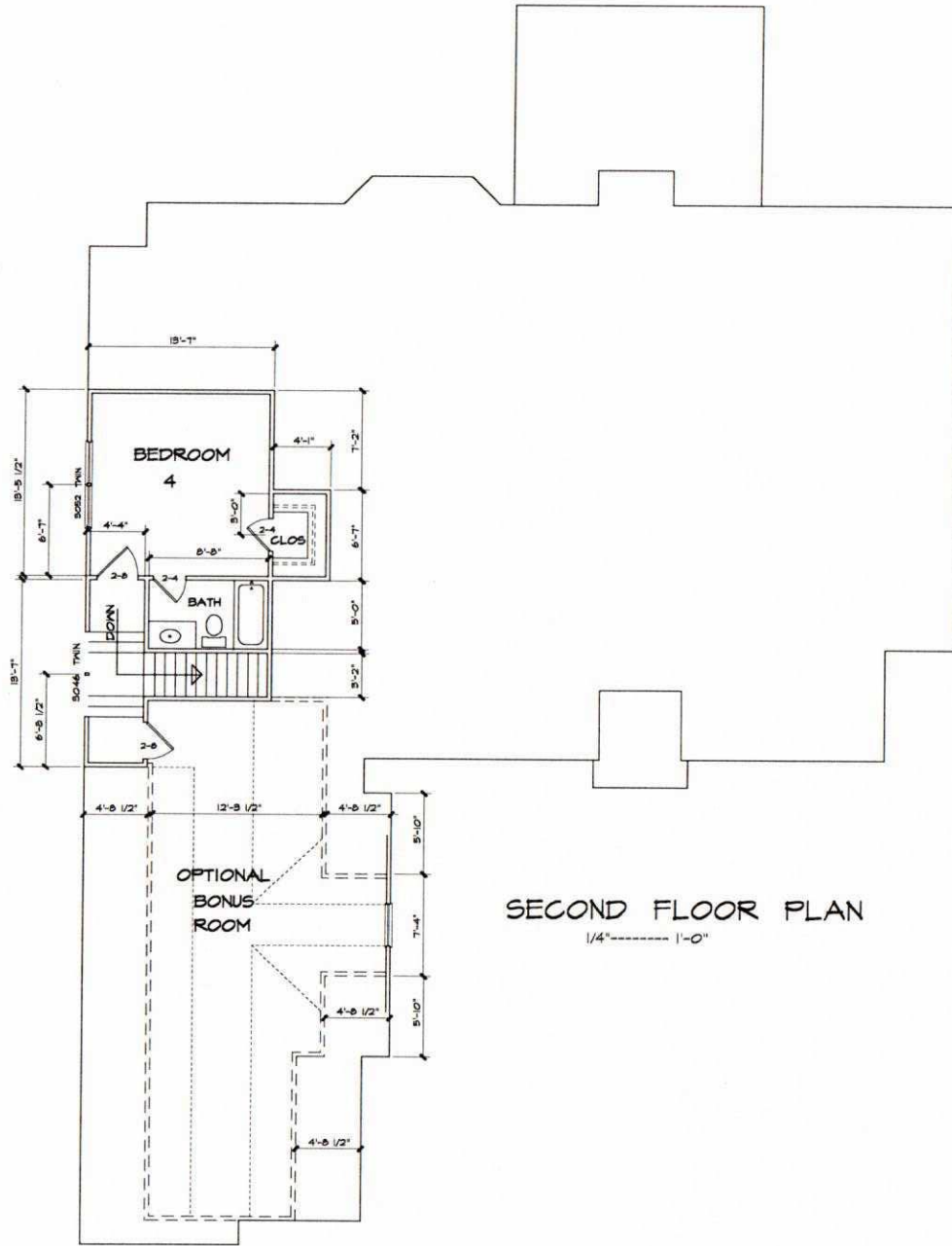
DK DESIGNS, INC.
 FAYETTEVILLE, GA.
 T70-460-4495

DK DESIGNS, INC.

REVISION

ALL B/D
 PROFESSIONAL MEMBER
 AMERICAN INSTITUTE OF
 BUILDING DESIGN

MASONVILLE PARK
 COURTYARD ENTRY



SECOND FLOOR PLAN
 1/4" = 1'-0"

DK DESIGNS, INC.
 FAYETTEVILLE, GA.
 TTD-460-4445

DK DESIGNS, INC.

REVISION

ALL BID
 PROFESSIONAL MEMBER
 AMERICAN INSTITUTE OF
 BUILDING DESIGNERS

MASONVILLE PARK
 COURTYARD ENTRY